

# WELCOME TO THE HCU



New Student Orientation  
(OE-Woche)  
WiSe 2023/24

# Welcome to HafenCity University

From 09.10.2023 to 13.10.2023, the so-called “Orientierungseinheit” will take place before the start of lectures.

The format is essentially a ‘New Student Orientation,’ during which **you will participate in events and receive relevant information** to help ease your start at HCU. Of course, you will also have the opportunity to get to know the university, the city, and, most importantly, each other.




On the following pages, you will find the **schedules for the New Student Orientation** in the respective study programs. **The program takes place on-site at the HafenCity University.**

In addition to the official introductory events by the university, which you should not miss, your student representatives will also organize a series of events. To stay informed about the activities of the student committees, follow the AStA on Instagram at [instagram.com/astahcu](https://www.instagram.com/astahcu).

You can find the current version of the brochure at [www.hcu-hamburg.de](http://www.hcu-hamburg.de). **To not miss out on anything, also subscribe to HCU's social media channels (Page 9) and check your university email inbox!**

## Color Guide

The schedules on the following pages are color-coded to distinguish different student groups.

-  **Bachelor Events**
-  **Master Events**
-  **Events for international students**



## Dear (new) students,

I would like to warmly welcome you to HafenCity University Hamburg. We are delighted that you have chosen us – one of the smaller, younger, and undoubtedly most beautiful universities in Germany. The uniqueness of HCU will hopefully become apparent to you very quickly, and by that, I am not only referring to our outstanding location on the Norderelbe River but also, above all, to the personal level of connection and engagement that you will find here.

With the start of your bachelor's studies, a new chapter in your life begins, one that is likely to be characterized by curiosity, expectations, a touch of awe, but above all, the great freedom to dedicate yourself to exactly what you have chosen. For some of you, this also marks the transition to one of Germany's most exceptional metropolises, some even say the most beautiful German city, the Free and Hanseatic City of Hamburg. I assure you that studying and living in Hamburg is a great decision.

For those who are embarking on a master's program, this is the beginning of specialization, the expansion of existing knowledge, and a challenging preparation for your future career – be it in business, government, or academia. We thank you for placing your trust in us for this crucial phase of your education and sincerely hope that you will achieve your personal goals.

At HCU, we embrace the approach of addressing major challenges, especially climate change and the impacts of digitalization, as well as the growing concern for social justice in our fields. We provide scientifically grounded answers based on our expertise in architecture and urban development. We hope that you will feel well-supported here and are eager to research and work together on these topics.

We, the entire executive board and the many outstanding staff members at HCU, wish you a successful start to your studies and look forward to a shared future at HCU.

Yours sincerely,  
**Jörg Müller-Lietzkow**  
President of HafenCity University





# The Library

When is the library open?

How can I activate my HCU-Card?

What are VPN and Shibboleth?

You can find this and other information on our website:

[www.hcu-hamburg.de/bibliothek](http://www.hcu-hamburg.de/bibliothek)



## Contact

+49 (0) 40 42827-5675  
ausleihe@hcu-hamburg.de



## Borrowing Books

All media can be found through our library website. You can borrow and renew almost all of our books for four weeks contactless and free of charge.

Before borrowing the first time you need to activate your HCU-Card as a library card.



## Read e-books online

You can access our ebooks, ejournals and databases via VPN and Shibboleth even from home. You simply need your HCU ID.



## Welcome Days for international students

	WEDNESDAY 04.10.2023	THURSDAY 05.10.2023
WHO:	ALL INTERNATIONAL STUDENTS	
Room	3.103	
Time		
10:00	<b>Word of Welcome - Opening Session</b> Introduction, information on the HCU and paperwork related to your studies	<b>First Steps in Hamburg</b> Health insurance, „Meldebestätigung“, bank account, etc.  & <b>Information on „Hochschulsport“</b> Sports opportunities for students
10:30		
11:00	<b>Time to ask questions</b> e.g. regarding your Erasmus related paperwork	
11:30	<b>Information on degree programs and course registration (ahoi)</b> You can also ask questions afterwards	<b>Course registration</b> in case you have questions, technical problems, etc. Via <a href="#">zoom</a>
12:00		
12:30		
13:00		
13:30		



## How-to: Using the HCU Library

What is available in the library? Do I have to register separately? How does the library help me in my studies?

Learn everything you need to know about using the library and what the library has to offer - from A for access from home, to L for lending, to Z for Zotero.

	MONDAY 09.10.2023	TUESDAY 10.10.2023	WEDNESDAY 11.10.2023
13:00			
14:00			
15:00			
16:00			

Duration: 20 minutes

Meeting point: Magazine lounge on the first floor of the library

## Global network



**>80**  
Partner universities  
in the EU



**6**  
Partner universities  
in the rest of the world



**i**  
International  
Office

	MONDAY 09.10.2023		TUESDAY 10.10.2023						WEDNESDAY 11.10.2023				
WHO:	BACHELOR	MASTER + INTERNATIONAL STUDENTS	ARCHITECTURE	CIVIL ENGINEERING	GEODESY AND GEOINFORMATICS	METROPOLITAN CULTURE	URBAN PLANNING	TGA WITH DI	ARCHITECTURE	CIVIL ENGINEERING	REAP - RESOURCE EFFICIENCY IN ARCHITECTURE AND PLANNING	URBAN PLANNING	URBAN DESIGN
Room Time	Holcim Auditorium	Auditorium 200 + 150	200	Holcim	2.015	3.008	150	2.103	200	Holcim	2.015	150	3.008
09:30													
10:00	<div>10:00 - 10:15 Welcome by the President's Office</div> <div>10:15 - 10:25 Student Administration</div> <div>10:25 - 10:40 Ahoi - General Introduction</div> <div>10:40 - 11:00 Moodle - Digital Tools</div> <div>11:00 - 11:10 Library Introduction</div> <div>11:10 - 11:25 Introduction to the International Office</div> <div>11:25 - 11:35 Introduction to FAST</div> <div>11:35 - 11:45 Study Spaces</div> <div>11:45 - ca. 12:45 Safety Briefing</div>		<div>10:30 - 10:45 Welcome by the President's Office</div> <div>10:45 - 10:55 Student Administration</div> <div>10:55 - 11:10 Ahoi - General Introduction</div> <div>11:10 - 11:30 Moodle - Digital Tools</div> <div>11:30 - 11:40 Library Introduction</div> <div>11:40 - 11:55 Introduction to the International Office</div> <div>11:55 - 12:05 Introduction to FAST</div> <div>12:05 - 12:15 Study Spaces</div> <div>12:15 - ca. 13:15 Safety Briefing</div>	<div>Study Program Introduction ARC</div>	<div>Study Program Introduction BIW Bachelor + Master</div>	<div>Introduction Ahoi Bachelor @ E.007</div>	<div>Study Program Introduction SP</div>		<div>Study Program Introduction ARC</div>	<div>Study Program Introduction REAP</div>		<div>Study Program Introduction SP</div>	<div>Introduction Ahoi @ 3.103</div>
10:30													
11:00													
11:30													
12:00													
12:30					<div>Introduction Ahoi Master @ E.007</div>	<div>Introduction Ahoi @ 3.103</div>	<div>Study Program Introduction SP</div>	<div>Study Program Introduction TGA</div>	<div>Introduction Ahoi III @ E.007</div>	<div>Study Program Introduction REAP</div>	<div>Study Program Introduction SP</div>	<div>Introduction Ahoi @ 3.103</div>	
11:00													
11:30													
12:00													
12:30													
13:00			<div>Introduction Ahoi I / II @ E.007 + 3.103</div>	<div>Study Program Introduction GEO Bachelor</div>	<div>Study Program Introduction SP</div>		<div>Introduction Ahoi @ E.007</div>	<div>Introduction Ahoi @ 3.103</div>	<div>Introduction Ahoi @ E.007</div>	<div>Introduction Ahoi @ 3.103</div>	<div>Study Program Introduction UD</div>		
13:30													
14:00													
14:30													
15:00													
15:30			<div>Introduction Ahoi I / II @ E.007 + 3.103</div>	<div>Study Program Introduction GEO Master</div>	<div>Study Program Introduction KDM</div>								
16:00			<div>Introduction Ahoi III @ E.007</div>										

ahoi-Support

We are here for you and offer continuous ahoi support at the following times:

Monday: 1 pm - 4 pm

Tuesday and Wednesday: 10 am - 4 pm

Feel free to contact us with any questions about

Bachelor Events

Master Events

## ahoi-Support

We are here for you and offer continuous ahoi support at the following times:

Monday: 1 pm - 4 pm

Tuesday and Wednesday: 10 am - 4 pm

Feel free to contact us with any questions about ahoi in rooms E007 and 3.103!

 Bachelor Events

 Master Events

# General Information

**On the following pages you will find explanations for the most important terms as well as the contact information for student representatives at HCU.**

From “Ahoi” to “Workshops” (workshops), from “University Sports” to the necessary meal in “Cafeteria and Café” - we have tried to list a few terms that are relevant to your studies. On the following pages you will find an explanation of each term, often supplemented by a link that will lead you to further information on the individual topics.

Nevertheless, we are only scratching the surface here and you will get a lot more useful information and additional tips during your New Student Orientation: Both from us as the university and, of course, from your *Kommiliton:innen* who will accompany you at the start of university.

*Kommiliton:innen* - A first term you can look up here..



## Submission

Term papers, drawings or other examination results must be handed in on time, either in electronic form, i.e. by e-mail as an attached PDF file, or in paper form, to the respective lecturer.

Please refer to the comments in ahoi for the respective course to find out in which way the examination has to be handed in. If you have any questions, please contact your lecturer.



## Ahoi

At HafenCity University, ahoi stands not only for the maritime greeting, but also for “General University Organization and Information System” (In German the abbreviation makes sense). This is where you already applied for your studies and where you also register for seminars, lectures and exams. During the first days of the New Student Orientation, there will be special ahoi introductions for you. There, ahoi tutors will explain to you how to structure and organize your studies via ahoi.

You log in with your HCU-ID at [www.ahoi.hcu-hamburg.de](http://www.ahoi.hcu-hamburg.de).



## Library

Every university has a library. You will find ours directly on the left when you enter through the main entrance on the ground floor. Or you can take a look at the map in this booklet. The library offers you a selection of books for your studies (digital and on-site), workstations, workshops and many other services to help you through your studies.

You can find the latest news on the pages of the library: [www.hcu-hamburg.de/it-und-medien/bibliothek](http://www.hcu-hamburg.de/it-und-medien/bibliothek)



## Equality and Diversity

The Equal Opportunity Officer and her team pay attention to the implementation of equal opportunities on a structural, individual and social level. Gender mainstreaming and diversity management are anchored in all areas of HCU. The Equal Opportunity Officer advises students on equal opportunities, studying with children, and sexual violence and discrimination.

For students with children, we provide a parent-child room, a play corner in the cafeteria, and high chairs for children in the dining hall.



## HCU-Card

The electronic chip card simplifies a variety of everyday tasks for you.

Among other things, the card can be used as an ID card, as a library card, for printing, copying and scanning, as a semester ticket and as a means of payment for printing or in the cafeteria.

To charge your credit, there are two terminals behind the stairs on the ground floor and in the cafeteria.



## HCU-ID

The HCU-ID is your key to the digital universe of HafenCity University. Register for events in ahoi, upload materials for courses in moodle or connect to the WLAN: The HCU-ID is your comprehensive user name with the corresponding password.

If you forget your password, you can get a new one at the Infothek.



## University Sports

Scoring hoops, rowing on the Alster or breathing in the downward dog: In addition to learning and lectures, there must also be room for physical activity and sports.

The Hochschulsport Hamburg offers all students a program of various sports activities.

You can get a first impression at the Info Fair.

For more information: [www.hochschulsport.uni-hamburg.de](http://www.hochschulsport.uni-hamburg.de)



## International Office

You would like to do a semester abroad or are interested in an internship abroad? Then the International Office can help you. If you have any questions about partner universities, where you can do a semester abroad or what support is available, the colleagues of the International Office will be happy to assist you.

The offer will be presented on the first day of the New Student Orientation.

[www.hcu-hamburg.de/internationales](http://www.hcu-hamburg.de/internationales)



## Kommilitone/ Kommilitonin

Wikipedia says: “Kommilitone” is a common German term used by students for their fellow students.

We have nothing to add to this.



## Construction Laboratories

In the basement, you will find excellently equipped laboratories with numerous testing machines, experimental equipment and a wide variety of analytical devices, as well as an extensive collection of construction materials.

In the programs of architecture and civil engineering many practical exercises take place here.

The building plans in this brochure show where you can find the laboratories.



## Print, Scan and Copy

Multifunction printers are available for students on the 1st and 2nd floor south, as well as in the library.

For printing and copying you have to charge your HCU-Card with credit at the terminal on the ground floor.

Scans can be sent to your email address.

To connect to the printer, you must be logged into the university's scientific network and enter the following URL in browser:

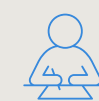
<https://print03.ad.hcuhh.de>



## FAST

No matter which degree program you start at HCU, you will always encounter the interdisciplinary study programs (FaSt). The goal is for you to take courses within the framework of FaSt that allow you to look beyond your own field and gain completely different perspectives.

How this works in detail will be explained to you during the New Student Orientation.



## Study Spaces

Where can I study for an exam?  
Where can I work on my projects?

And where do I have the opportunity to sit down with my project group? Where is model work possible, where not?

During the New Student Orientation you will find all the important information on this.

Here you can find an overview of all studying locations: [www.hcu-hamburg.de/studentische-angelegenheiten/studentische-arbeitsplaetze](http://www.hcu-hamburg.de/studentische-angelegenheiten/studentische-arbeitsplaetze)



## Cafeteria and Café

Our cafeteria and café are located directly to the right coming from the main entrance and are operated by a team of the Studierendenwerk. You will find a variety of delicious food there: In addition to antipasti, meat, vegetarian and vegan dishes, you can also enjoy fresh pasta and pizza.

The café is open from 8 am to 5.30 pm. Meals are available from 11 am to 2 pm.

The offer during the non-lecture period is limited.

You can find today's menu at [www.stwhh.de/gastronomie/mensen-cafes-weiteres/mensa-hcu](http://www.stwhh.de/gastronomie/mensen-cafes-weiteres/mensa-hcu)



## Moodle

Moodle is a elearning platform used at HCU and many other universities. There, your teachers provide you with materials, you can upload your own documents or form groups. On the first day of the New Student Orientation you will get a first introduction to the use of Moodle.

How Moodle is used in the courses will be explained by the lecturers in their courses.

You can find moodle at [moodle.hcu-hamburg.de](http://moodle.hcu-hamburg.de) and log in with your HCU ID.





## PC-Pool

There are several rooms at HCU with PC workstations equipped with all the programs you need for your studies.

The rooms are located on the first floor, in the library and on the 3rd floor.

The introductory events for the use of Ahoi for your study program take place in the PC-Pools in room E.007 and 3.103.

A complete list of the installed software can be found on the website:

[www.hcu-hamburg.de/studentische-angelegenheiten/pc-pool](http://www.hcu-hamburg.de/studentische-angelegenheiten/pc-pool)



## Resource Rental

or equipment rental is the place to go to reserve presentation space in the main building or in the Märchenwelten, to request access to the PC workstations in the Campustower, or to borrow equipment for media productions, surveying instruments, Styrocut tools, and much more.

Rental inquiries and reservations can be made online: [www.hcu-hamburg.rentware.io](http://www.hcu-hamburg.rentware.io)

You can pick up and return the equipment in room 3.006 in the main building of the HCU.



## Studierendenwerk

Mensa, dormitory, BAföG, counseling and much more are provided for you by the Studierendenwerk Hamburg. It is your provider and contact point in social matters for your studies. The most visible services at HCU are, of course, the cafeteria and the café overlooking the water. You can find out what services the Studierendenwerk offers at the Info Fair.

And at any time on [www.stwhh.de](http://www.stwhh.de)



## Presentation Areas

Presentations of your projects are part of your studies, especially in architecture and urban planning. For this purpose, presentation areas are available in the main building.

In order to reserve the metal bars, to where plans, drafts and posters can be attached with magnets, a booking via the web store of the resource rental is necessary:

[www.hcu-hamburg.rentware.io/items/D1LX6E](http://www.hcu-hamburg.rentware.io/items/D1LX6E)

Please always remember to leave the areas clean and tidy for the next person to use.



## Locker

There are over 200 lockers available in the main building of the HCU. These are used for the safe storage of clothing, bags, work documents and similar materials.

The available lockers can be used on a first come, first served basis. If you wish to use a permanent locker in the student workstation area, you will need your own padlock.

Please make sure that you clear the lockers when you no longer need them for other students to use.



## Workshops

There are various workshops and laboratories at HCU. For model making, there are 12 workstations in the wood workshop. There is another workstation in the 3D printing area. These can be booked via Moodle.

In addition, the model workshop offers the CNC milling service and 3D printing.

For both services, please register by e-mail: [tom.kniephoff@hcu-hamburg.de](mailto:tom.kniephoff@hcu-hamburg.de)



## Psychological Counseling

During our studies and beyond, any of us can encounter a difficult phase in life, or experience overload and crisis can occur. You can't always handle everything on your own. That's okay. And it is good to get help.

The Psychological Counseling Service of the University of Hamburg also supports HCU students and faculty in this matter.

You can get initial information about this at the Info Fair on the first day of orientation. Better safe than sorry.

Otherwise you can find the service here: [www.uni-hamburg.de/campuscenter/beratung/beratungsangebote/psychologische-beratung.html](http://www.uni-hamburg.de/campuscenter/beratung/beratungsangebote/psychologische-beratung.html)



## Safety Briefing

What happens if something does happen? Didn't see a glass door, missed a step, got a paper cut - in any case, you need to know what to do, where to find help, and what rules apply.

Very important: Always report accidents! You can find the form here: [www.hcu-hamburg.de/universitaet/services-und-kontakt/downloads](http://www.hcu-hamburg.de/universitaet/services-und-kontakt/downloads)

During the New Student Orientation there is a detailed safety briefing in German and English.



## WLAN (Eduroam)

Very important for your studies and in general: The Internet. The Eduroam WLAN is available to you at many universities and colleges in Germany and internationally - of course also at our HafenCity University.

To gain access, you need your HCU ID and the corresponding password. You can set it up via the [Geteduroam app](https://get.eduroam.org/app/) or at <https://get.eduroam.org/app/>.

# More than the main building



## Campus Tower

In order to create further opportunities for focused work, we have expanded the range of group and quiet workstations and offer our students suitable space in the Campus Tower.



## Märchenwelten

Once, figures from Grimm's fairy tales could be seen here; all that remains is the name. HafenCity University is using the building on the other side of Baakenhafen Bridge to create more workplaces for students. They can be used as group workplaces or workstations for model building.



## Elbarkaden

The Elbarkaden are a short walk from the main HCU building. This is where the CityScienceLab is located, which researches the transformation of cities in the context of digitalization with partners from civil society, politics, business and science.

# Your main contacts

## SOCIAL MEDIA CHANNELS BY THE UNIVERSITY:



@hcuhamburg



@HCUHamburg



## Infothek

The Infothek is your first point of contact for questions about the application process, studying, forms and looking for the right contact person at HafenCity University.

You will find it when you enter the main entrance to the university on the left, at the counter of the library on the left side.

By phone 040/428 27 53 54 or mail [infothek@hcu-hamburg.de](mailto:infothek@hcu-hamburg.de)

For further information please visit <https://www.hcu-hamburg.de/en/universitaet/einrichtungen-der-hcu/infothek>



# Your student representation



## SOCIAL MEDIA CHANNELS BY THE STUDENTS:

-  @astahcu
-  @fsrarchitektur
-  @fsr\_biw\_hcu
-  @fsr\_stadtplanung
-  @fsr\_geo\_hcu
-  @ud\_hcu
-  @fsr\_reap

### AStA

The General Student Committee (AStA) is the elected "government" of the students. Once a year you can elect your representatives to the Student Parliament (StuPa), which then elects the AStA. Committed fellow students represent your interests, take care of your concerns, organize events (e.g. the program for the New Student Orientation) and are happy to welcome motivated new members.


Meet them at the Info Fair.  
Or at [www.asta-hcu.de](http://www.asta-hcu.de)

### FSR


What the AStA is for all students, the Fachschaftsrat (FSR) is for each study program. It represents the interests of the students in the study program, stands up for their issues and concerns, organizes excellent events and is always happy to welcome interested new students.

You can find your student representatives in an overview at [www.asta-hcu.de/studien-tische-gremien/](http://www.asta-hcu.de/studien-tische-gremien/)


## Student social program

 Monday, 9.10.23  
9 am - 10 am


**Arriving at HCU**  
Cafeteria

 Tuesday, 10.10.23  
11 am - 2 pm


**Meet your Locals**  
in selected Hamburg parks

 Wednesday, 11.10.23  
11 am - 2 pm


**Meet your Locals**  
in selected Hamburg parks

 Thursday, 12.10.23  
10 am - 5 pm

**City Rally**

 Thursday, 12.10.23  
6 pm - 8 pm

**Terrace celebration**  
HCU

 Friday, 13.10.23  
3 pm - 8 pm

**Flunkyball**  
Lohsepark

[stellenwerk.de/hamburg](http://stellenwerk.de/hamburg)

# klick, klick, JOB!

Das offizielle Jobportal deiner Hochschule

 Universität Hamburg  
DER FÖRDERUNG DER KUNST UND DER BILDUNG

 HAW  
HAMBURG

 hcu  
HafenCity  
Universität  
Hamburg

 TUHH  
Technische Universität Hamburg

 **stellenwerk**  
jobportal hamburgischer hochschulen

Together for a more beautiful university:

# Please return your cups!



Your support is needed! Please return your cups after use in the café. We all benefit from a clean and tidy learning and working environment.

Let's create a better university together!



## Nachhaltigkeit soll von Anfang an Teil deines Studiums sein?

Lerne jetzt mit Technologien die Welt nachhaltiger zu gestalten.

- Melde dich kostenlos an und starte mit einem Kurs deiner Wahl.
- Bestimme selbst, zu welchen Nachhaltigkeitszielen du mehr lernen möchtest.
- Erhalte ECTS für den erfolgreichen Kursabschluss.
- Lerne wann und in welchem Tempo du möchtest parallel zu deinem Studienfach.

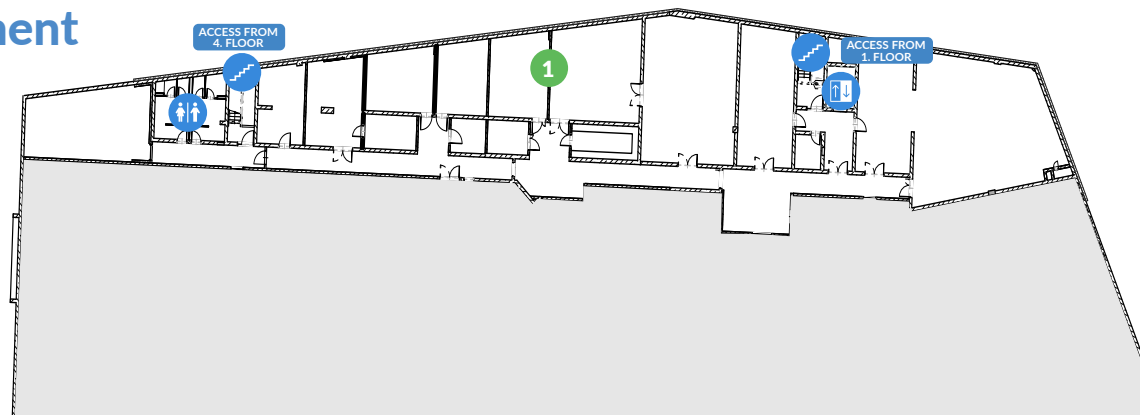


**SDG-Campus**  




# Building Overview

## Basement



## Ground Level



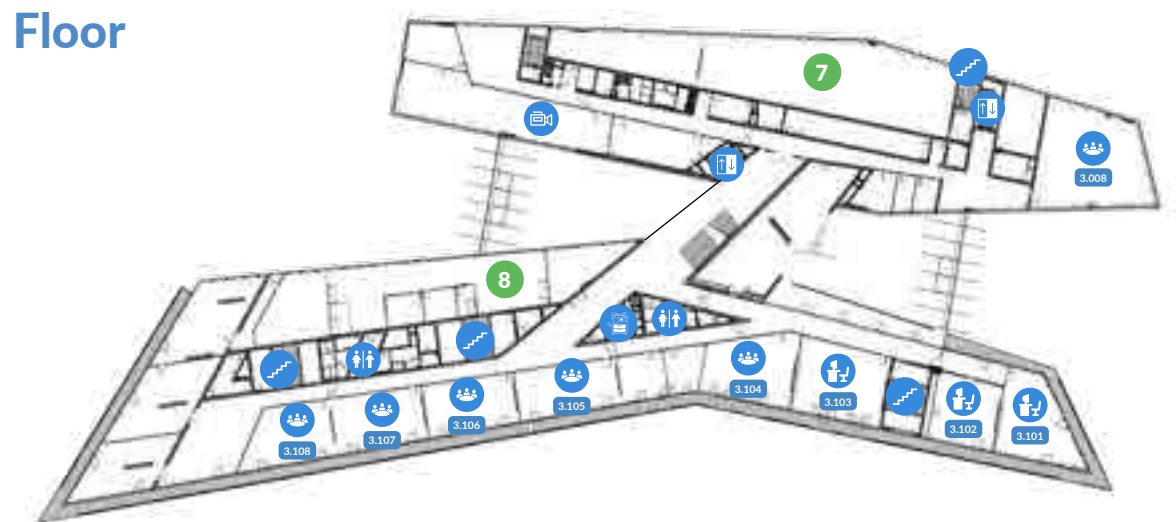
## 1. Floor



## 2. Floor



## 3. Floor

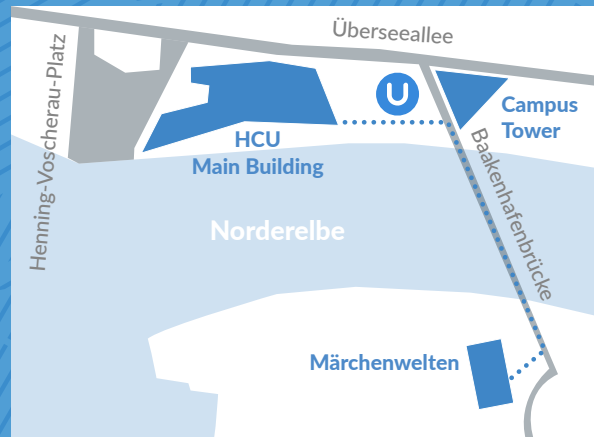


- |                          |                         |                       |
|--------------------------|-------------------------|-----------------------|
| 1 Construction Labs      | i Infothek              | ☒ Cafeteria           |
| 2 AstA                   | 📖 Library               | ☕ Café                |
| 3 Student Councils (FSR) | 🏛 Auditorium            | ⛑ First aid room      |
| 4 Metal workshop         | 👥 Teaching room         | U U4 Subway station   |
| 5 Model workshop         | 💻 PC-Pool               | 👨👩👧 Parent-Child-Room |
| 6 Plaster workshop       | 📖 Study Space           | 🚻 Restrooms           |
| 7 Geodetic laboratory    | 🖨 Multifunction printer | 🚪 Elevator            |
| 8 Wood workshop          | 📺 Resource Rental       | 🚲 Bicycle parking     |
|                          | 🔒 Lockers               | 🚬 Smoking area        |
|                          | 💳 HCU-Card Terminal     |                       |



## Campus map

100m from the main building to the Campus Tower  
400m to Märchenwelten



## Address

HafenCity University Hamburg  
Henning-Voscherau-Platz 1  
20457 Hamburg  
Germany

## Contact

Fon: +49 (0)40 / 428 27 - 53 54  
Fon: +49 (0)40 / 428 27 - 53 55  
E-Mail: [infothek@hcu-hamburg.de](mailto:infothek@hcu-hamburg.de)  
Website: [www.hcu-hamburg.de](http://www.hcu-hamburg.de)

## Opening Hours

### Entrance West:

Monday to Friday: 6.30 am to 11 pm  
(from 7 pm controlled access with the HCU card)  
Saturday: 9 am to 10 pm  
(controlled access with the HCU-Card)  
Sundays and holidays: closed

### Entrance East (Subway):

Monday to Friday: 7 am to 7 pm  
Sundays and holidays: closed

