

Adaptive Facades Training School Hamburg 2016

DAAD
CAPES

 **cost**
EUROPEAN COOPERATION
IN SCIENCE AND TECHNOLOGY

 COST is supported by
the EU Framework Programme
Horizon 2020

 **COST TU 1403**
fn/Adaptive facades network

HCU | HafenCity Universität
Hamburg

Location: Hamburg, Germany
Local Organizer: HCU HafenCity University
Prof. Dr.-Ing. F. Wellershoff
Dates: September 12 - 17, 2016

Program:

Training School Lectures

- Design Phases for Adaptive Facade Systems:
- Conceptual Design, Materials and Technologies
 - Numerical Simulation
 - Mock Ups & Testing
 - Operation Performance Evaluation

PhD Colloquium, Technical Visits & Workshop

Learn from Colleagues, Professionals and Demo's



30 x 500 € Grants!

- For Beginning PhD Students
- Reimbursement of registration fee
 - Travel & accommodation bonus

80 Places available

- 50 international PhD Students (Europe + Brazil)
(30 grants by COST for the best applications)
- 30 Hamburg PhD & Master's students (HCU+TUHH)

Adaptive Facades Training School Hamburg 2016

DAAD
CAPES

 **cost**
EUROPEAN COOPERATION
IN SCIENCE AND TECHNOLOGY



COST is supported by
the EU Framework Programme
Horizon 2020

 **COST TU 1403**
fn/Adaptive facades network

HCU | HafenCity Universität
Hamburg

Objective:

The Training School aims at educating students in Adaptive Facade Systems by the leading international experts in the field.

In addition, with this initiative wants to offer a privileged networking opportunity to master's students and young researchers.

Who should attend:

Beginning PhD students and master's students with a background in Architecture, Engineering or Building Physics

Registration fee:

International PhD students / 200 €

(entrance to lectures, workshop, excursion, dinner, social gathering, lunch voucher, handouts)

HCU+TUHH PhD & Master's students / 50 €

(entrance to lectures, workshop, excursion, dinner, social gathering, handouts)



Double Skin facade - Source from sgarchitect.com

Detailed Technical Program & Speakers:

Details will be made available in due time on the website of COST action: <http://tu1403.eu/>

Travel and accommodation:

Successful candidates are expected to arrange their own travel and accommodation. Hotel recommendation and arrangements are available on the website: <http://tu1403.eu/>

Adaptive Facades Training School Hamburg 2016

DAAD
CAPES

cost
EUROPEAN COOPERATION
IN SCIENCE AND TECHNOLOGY

 COST is supported by
the EU Framework Programme
Horizon 2020

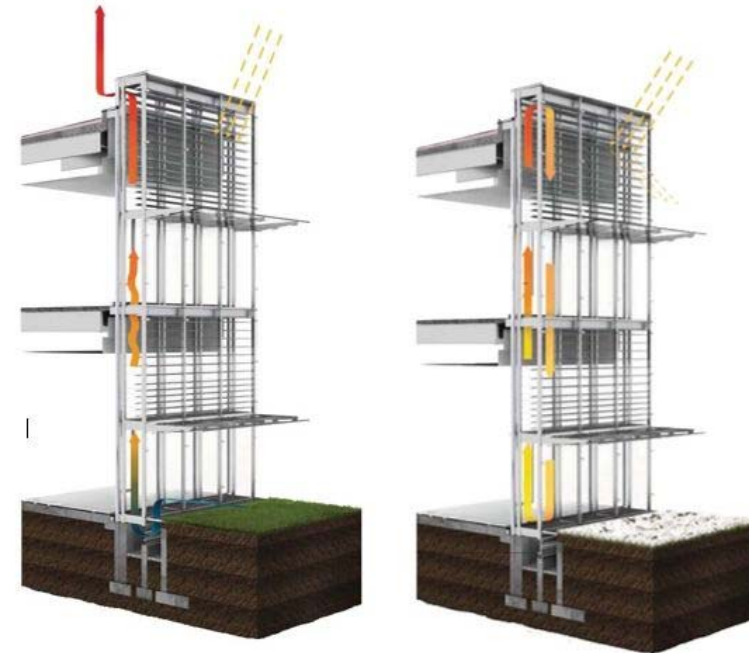
 **COST TU1403**
fn/Adaptive facades network
HCU | HafenCity Universität
Hamburg

How to apply:

Applicants should send their application not later than June 06, 2016 to:

Matija.Posavec@hcu-hamburg.de

The application should contain a detailed CV including information about facade design related education and software skills. PhD students should additionally inform about their research (or research intentions). The application form is available on: <http://tu1403.eu/>



Double Skin facade – ventilation and shading; Source from FenestraPro.com

Important Dates:

June 06, 2016

July 04, 2016

September 12-17, 2016

**Application deadline
Notification of
acceptance
Training School**

Selection & Grants:

An international Scientific Committee will select the successful candidates.

30 international PhD students will be rewarded with a COST grant (value 500 €). Grants include a reimbursement of the registration fee, plus 300 € to reduce travel expenses.

Adaptive Facades Training School Hamburg 2016



Tentative Schedule:

Participants	PhD students from Europe an Brazil					
	Hamburg PhD & Master students from HCU+TUHH (skills in Architecture, Engineering, or Building Physics)					
Time	Monday 12.09.2016	Tuesday 13.09.2016	Wednesday 14.09.2016	Thursday 15.09.2016	Friday 16.09.2016	Saturday 17.09.2016
Morning	Lectures Adaptive Facade Development Phase 1 Conceptual Design; Material & Technology	Lectures Adaptive Facade Development Phase 2 Numerical Simulation; Mock Ups & Testing	Lectures Adaptive Facade Development Phase 3&4 Operation Performance Evaluation	Workshop Climate Zone related Retrofitting of Facades	Workshop Climate Zone related Retrofitting of Facades	Workshop Climate Zone related Retrofitting of Facades
Afternoon	PHD progress reports feedback & discussion	Excursion to adaptive facades in Hamburg	Workshop introduction Definition of scope of work and boundary conditions			Workshop Final Presentations
Evening	Welcome Dinner		Teambuilding Dinner		Party	